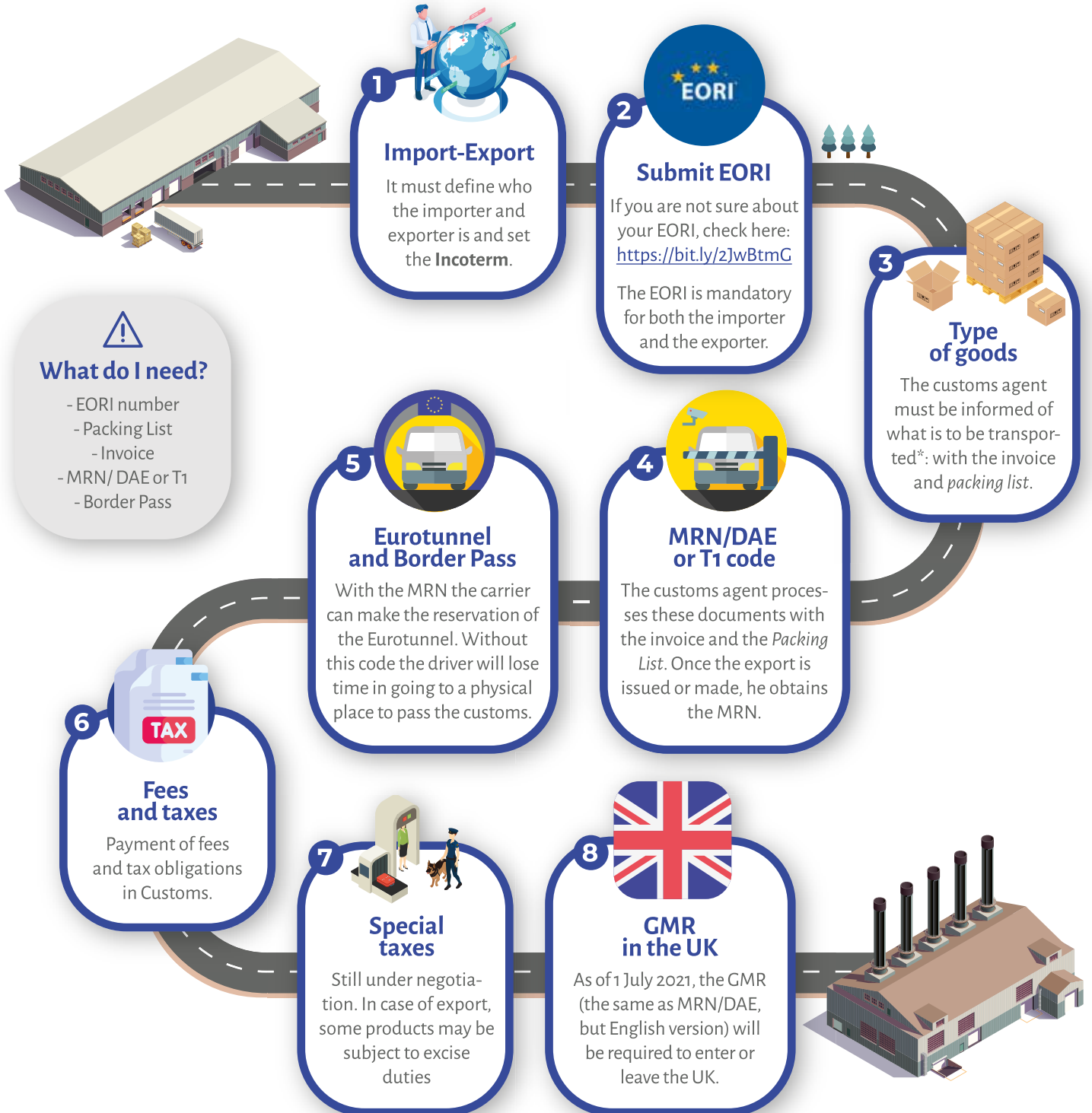


How is transport with the United Kingdom after Brexit?

New regulations with the European Union



What do I need?

- EORI number
- Packing List
- Invoice
- MRN/ DAE or T1
- Border Pass

Other documents of interest: TAD & KAP

UK > EUR T1 is compulsory, except when destination is France.

*Pallets must comply with the NIMP15/ISPM 15 standard, otherwise the goods may be blocked at the border.